

Prestigious Century City Law Firm Sublease

Shared Office Space



10250 Constellation
Los Angeles, CA 90067

Premises	A portion of the 29 th Floor – up to five (5) contiguous window offices
Term:	1 – 5 years
Rental Rate:	Negotiable
Parking:	3 per 1,000 square feet leased in the on-site garage
Notes:	<ul style="list-style-type: none">- First class design and improvements throughout- Extensive use of dark wood and glass within the space- Prestigious building in the heart of Century City- Very efficient layout with perimeter offices and work-stations- Shared reception area and conference rooms- Walking distance to numerous amenities

For More Information:

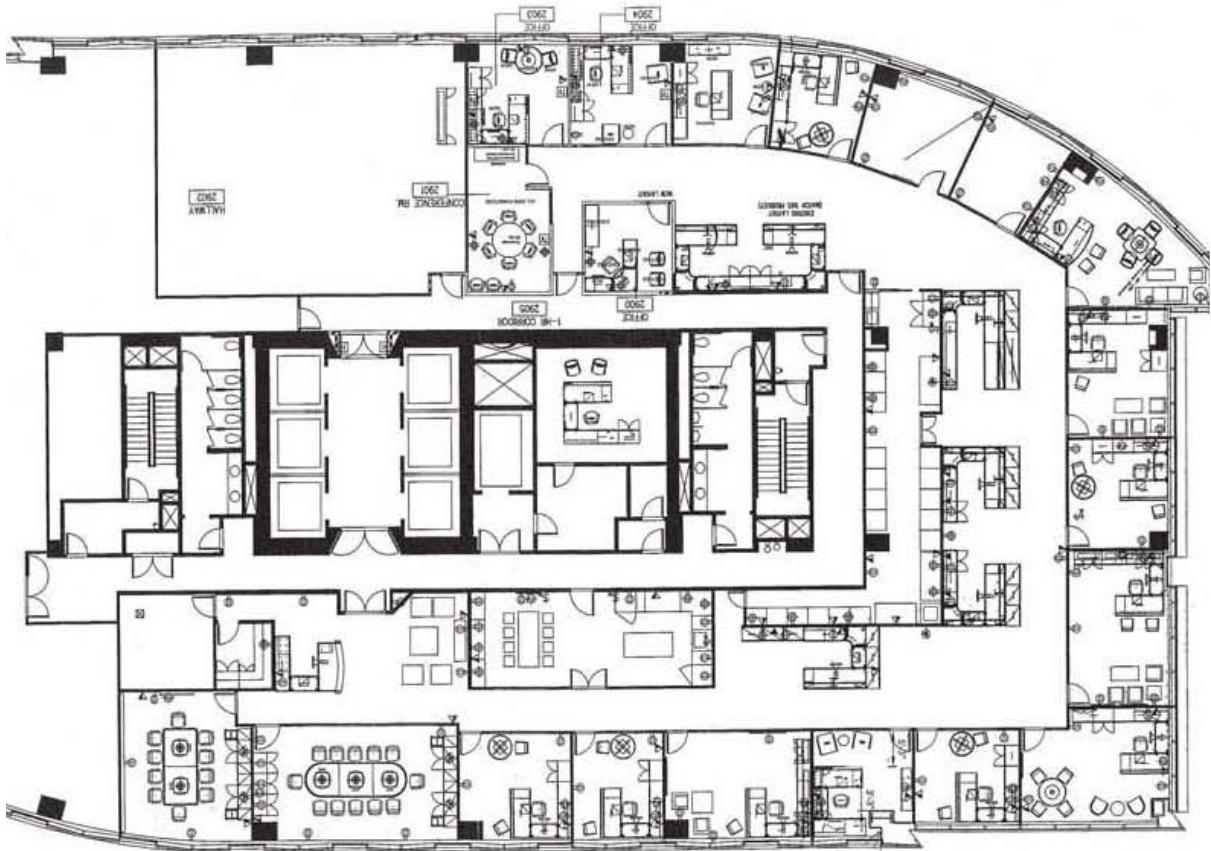
Lee J. Polster
License #01352625
310-966-8016
lee@traversrealty.com

Shawn T. Sala
License #01438990
310-966-8017
shawnsala@traversrealty.com



Prestigious Century City Law Firm Sublease

Shared Office Space



For More Information:

Lee J. Polster
License #01352625
310-966-80146

lee@traversrealty.com

Shawn T. Sala
License #01438990
310-966-8017

shawnsala@traversrealty.com

 **Travers Realty Corporation**
THE TENANT'S BROKER™

This information has been obtained from sources believed reliable. While we do not doubt its accuracy, we have not verified it and make no guarantee, warranty or representation about it. It is your responsibility to independently confirm its accuracy and completeness. Any projections, opinions, assumptions or estimates used are for example only and do not represent the current or future performance of the property. The value of this transaction to you depends on tax and other factors which should be evaluated by your tax, financial and legal advisors. You and your advisors should conduct a careful, independent investigation of the property to determine to your satisfaction the suitability of the property for your needs.