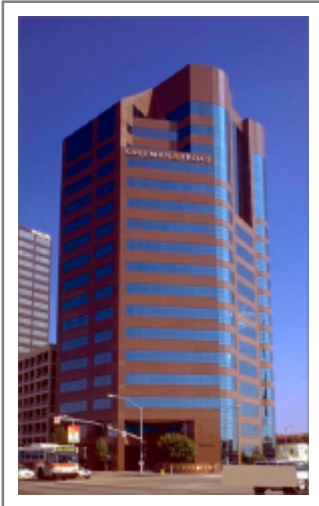


# Sensational Small Westwood Sublease Space



## 10990 Wilshire Boulevard

- Available Space:** Suite 1420
- Size of Space:** 1,999 rentable square feet
- Available:** Within thirty (30) days of sublease execution
- Build - Out:** Highly improved, move-in ready. Must see!
- Rental Rate:** \$3.15 per rentable square foot with 3% annual increases
- Sublease Term:** Sublease through November 30, 2013
- Parking:** 3 spaces/1,000 rsf leased with right to lease two (2) reserved spaces

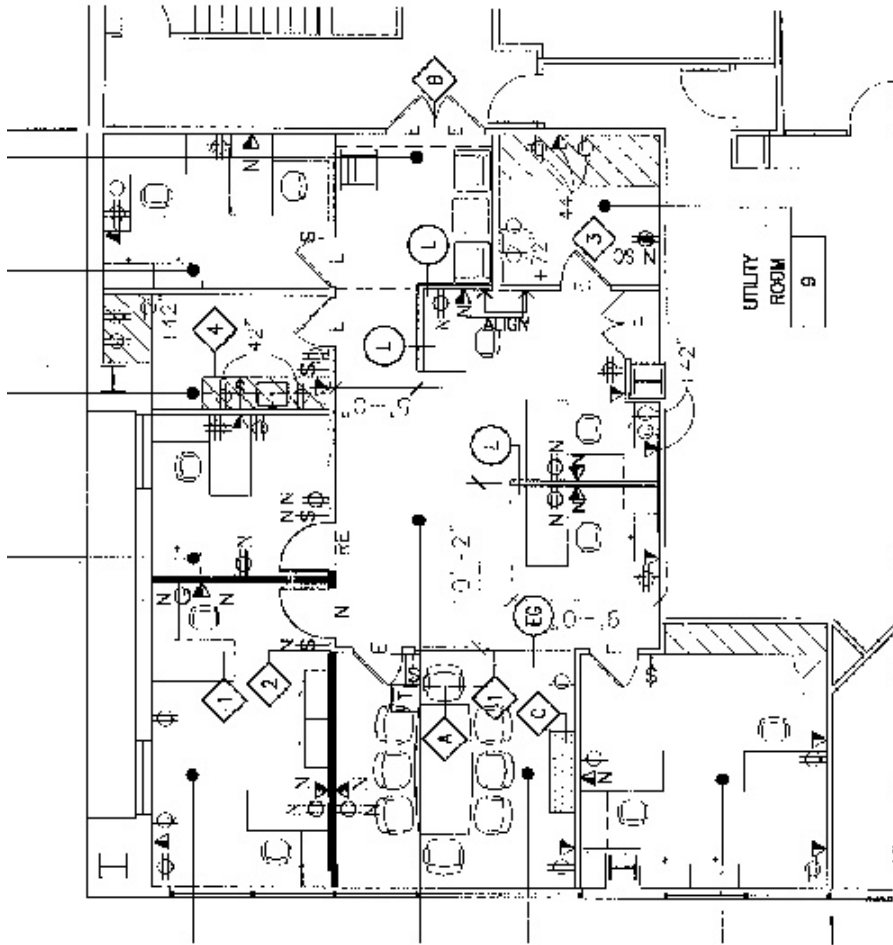
For More Information and Tour  
Please Contact:

Jeffrey D. Mintz  
(License #00756938)  
213 430-2458 (Office Direct)  
310 739-9306 (Mobile)  
[jmintz@traversrealty.com](mailto:jmintz@traversrealty.com)



This information has been obtained from sources believed reliable. While we do not doubt its accuracy, we have not verified it and make no guarantee, warranty or representation about it. It is your responsibility to independently confirm its accuracy and completeness. Any projections, opinions, assumptions or estimates used are for example only and do not represent the current or future performance of the property. The value of this transaction to you depends on tax and other factors which should be evaluated by your tax, financial and legal advisors. You and your advisors should conduct a careful, independent investigation of the property to determine to your satisfaction the suitability of the property for your needs.

# Sensational Small Westwood Sublease Space



Jeffrey D. Mintz  
(License #00756938)  
213 430-2458 (Office Direct)  
310 739-9306 (Mobile)  
[jmintz@traversrealty.com](mailto:jmintz@traversrealty.com)



*This information has been obtained from sources believed reliable. While we do not doubt its accuracy, we have not verified it and make no guarantee, warranty or representation about it. It is your responsibility to independently confirm its accuracy and completeness. Any projections, opinions, assumptions or estimates used are for example only and do not represent the current or future performance of the property. The value of this transaction to you depends on tax and other factors which should be evaluated by your tax, financial and legal advisors. You and your advisors should conduct a careful, independent investigation of the property to determine to your satisfaction the suitability of the property for your needs.*