

# CORPORATE PLAZA WEST

## Excellent Class "A" Sublease Opportunity

3,151 Rentable  
Square Feet

For more information, contact:

Mark W. Gardner  
(949) 644-5900 - Ext. 565  
Tenant Advisor  
Mgardner@traversrealty.com  
Lic #: 01353867

Randall S. Parker  
(949) 644-5900 - Ext. 561  
President  
Rparker@traversrealty.com  
Lic #: 01082963



## TRIVERS REALTY

840 Newport Center Drive  
Suite 770  
Newport Beach, CA 92660

CA Lic #: 00478795  
OC Lic #: 01202640

949.644.5900 Tel.  
949.644.5990 Fax

www.traversrealty.com



Sublease Premises:	Suite 230 – 3,151 RSF
Asking Rate:	\$2.95 FSG
Timing:	Construction complete. Immediate occupancy.
Term:	Flexible. 3 – 5 Years. Possibly longer.
Parking:	4.00/1,000 Surface – Free

### FEATURES & AMENITIES

- Strong credit Sublessor
- New construction, never occupied
- Double door lobby identity
- Most prominent location in Newport Center
- Direct access from Pacific Coast Highway
- Pre-wired for data/telecom
- Close proximity to Fashion Island Shopping/Dining Center and other retail amenities

# CORPORATE PLAZA WEST

## Excellent Class "A" Sublease Opportunity

3,151 Rentable  
Square Feet



For more information, contact:

Mark W. Gardner  
(949) 644-5900 - Ext. 565  
Tenant Advisor  
Mgardner@traversrealty.com  
Lic #: 01353867

Randall S. Parker  
(949) 644-5900 - Ext. 561  
President  
Rparker@traversrealty.com  
Lic #: 01082963



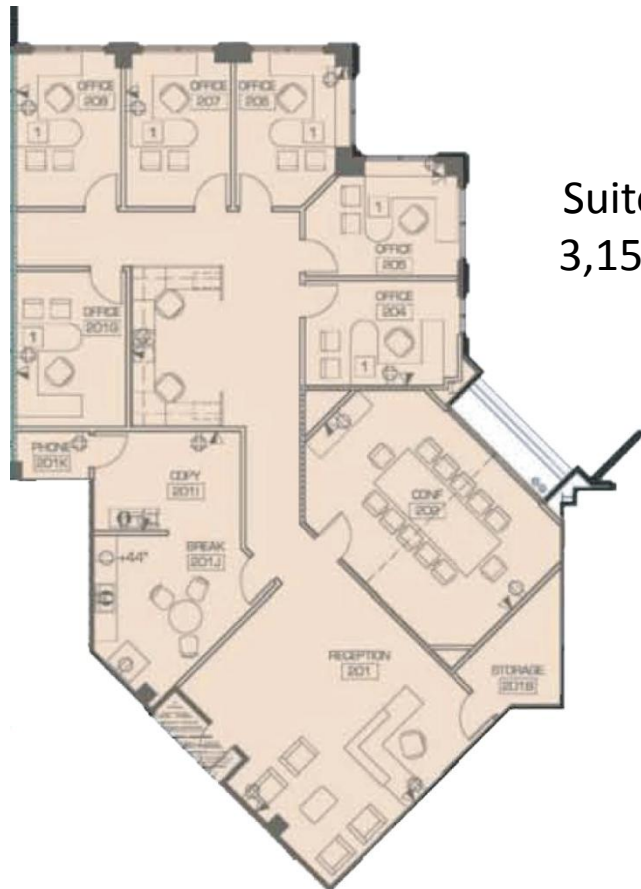
**TRIVERS REALTY**

840 Newport Center Drive  
Suite 770  
Newport Beach, CA 92660

CA Lic #: 00478795  
OC Lic #: 01202640

949.644.5900 Tel.  
949.644.5990 Fax

www.traversrealty.com



Suite 230  
3,151 RSF