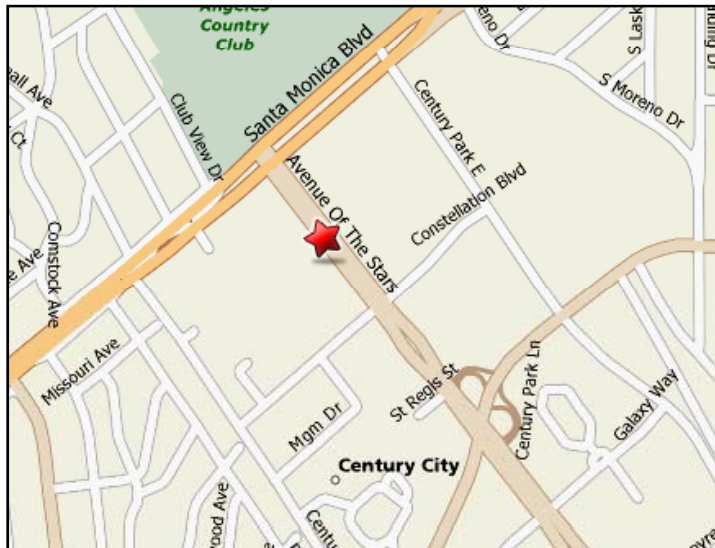


1901 Avenue of the Stars

Spectacular Sublease Features Highly Designed Installation



Premises: Suite 1000 / Approximately 3,150 rsf

Rate: \$2.85 per rentable square foot

Term: Expires February 2012

Features:

- 6 perimeter /window-line offices
- 4 existing work-stations
- 8 person conference room
- Wood floor reception area
- Designer furniture throughout
- Space is plug and play
- Ideal for all professional firms
- Building backs up to Westfield Mall
- Creditworthy sublandlord

For more information please contact:

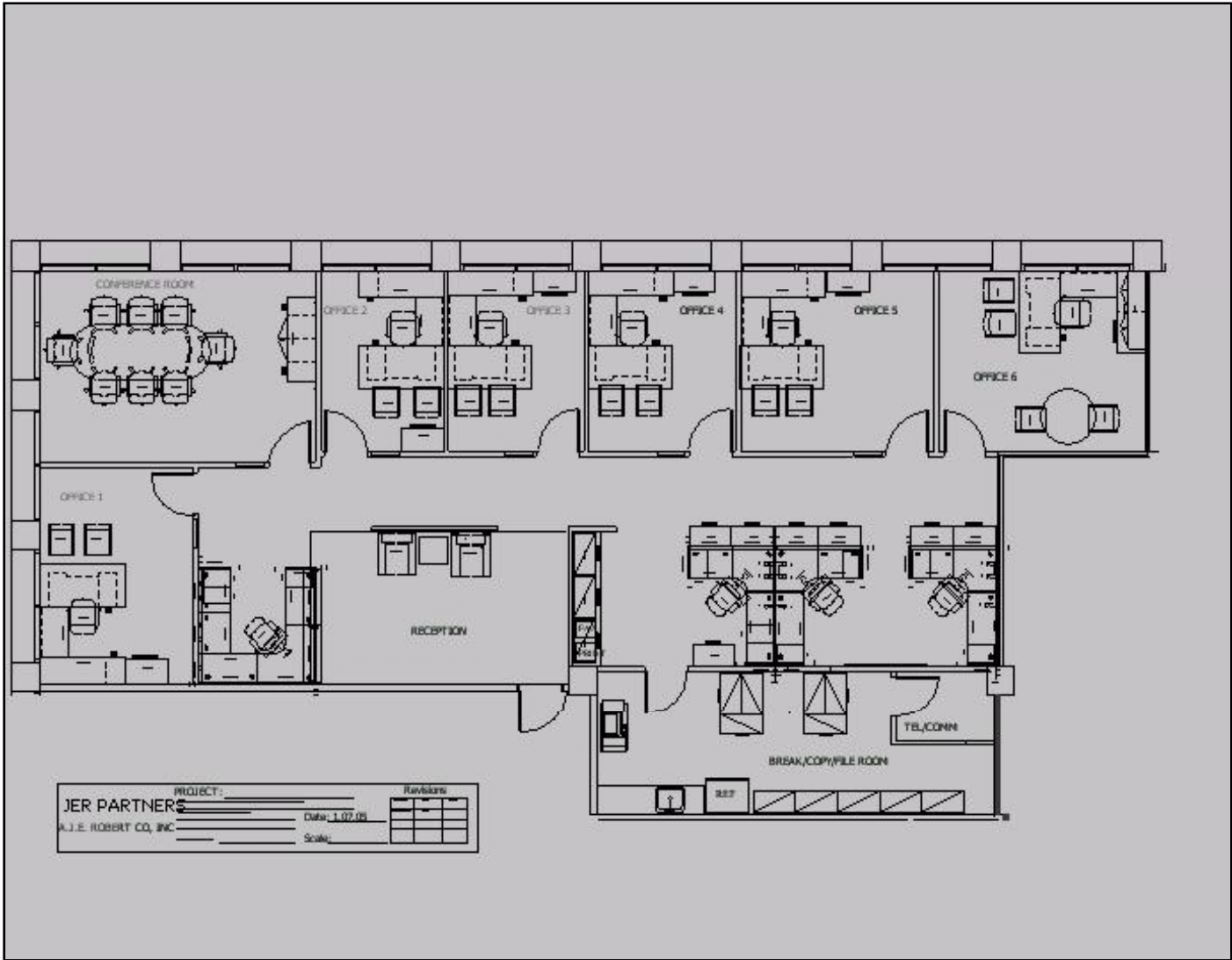
Lee J. Polster
310.409.9826
lee@traversrealty.com
License #01352625

 **Travers Realty Corporation**
THE TENANT'S BROKER™

11111 Santa Monica Boulevard, Suite 150
Los Angeles, CA 90025
License #00857710

This information has been obtained from sources believed reliable. While we do not doubt its accuracy, we have not verified it and make no guarantee, warranty or representation about it. It is your responsibility to independently confirm its accuracy and completeness. Any projections, opinions, assumptions or estimates used are for example only and do not represent the current or future performance of the property. The value of this transaction to you depends on tax and other factors which should be evaluated by your tax, financial and legal advisors. You and your advisors should conduct a careful, independent investigation of the property to determine to your satisfaction the suitability of the property for your needs.

FLOOR PLAN



For more information please contact:

Lee J. Polster
310.409.9826
lee@traversrealty.com
License #01352625



11111 Santa Monica Boulevard, Suite 150
Los Angeles, CA 90025
License #00857710