

# HISTORIC LANDMARK

## 5055 WILSHIRE BOULEVARD SUBLEASE



Location: 5055 Wilshire Boulevard  
Los Angeles, CA 90036

Premises: Suite 820 – Approximately 1,250 RSF

Rental Rate: ~~\$2.95/RSF~~ reduced to \$2.80

Availability: Immediate

Term: Through July 31, 2011  
(shorter term available, minimum one year term)

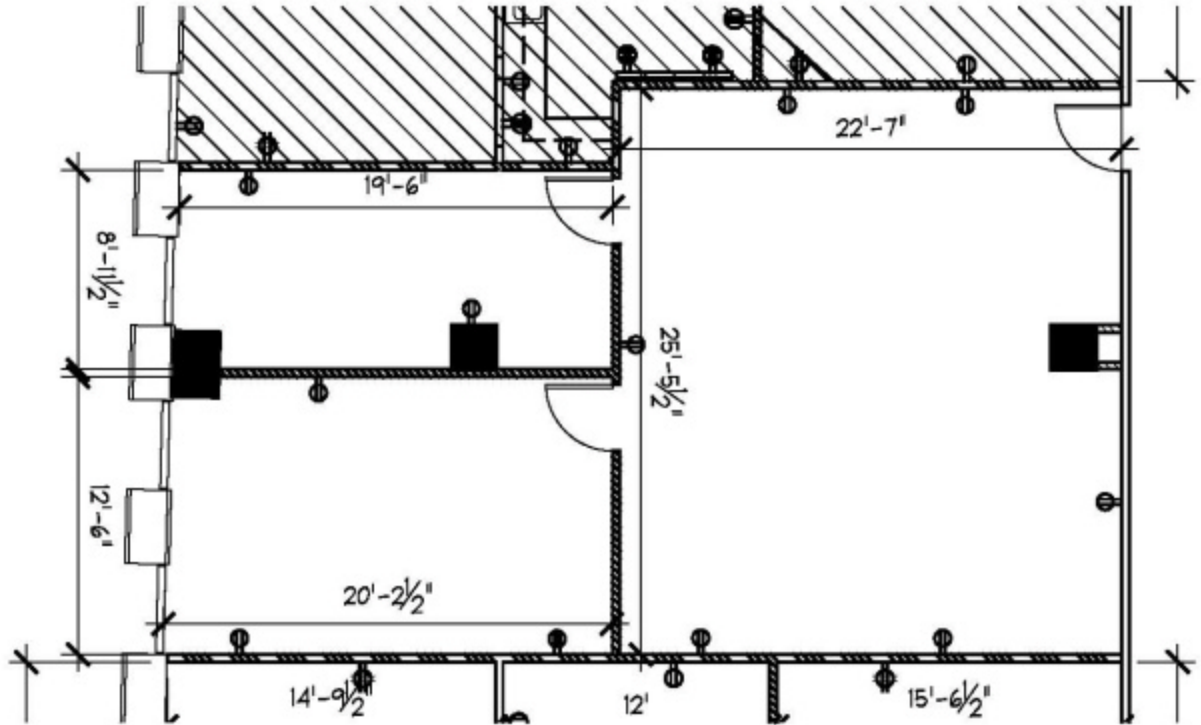
Linda Eng  
Lic. #: 01048287  
Senior Vice President  
310 780-4698  
[lindaeng@traversrealty.com](mailto:lindaeng@traversrealty.com)

### SUITE FEATURES

- Two Window Offices Overlooking Wilshire Blvd.  
(See attached floor plan)
- Approx 1,296 RSF Is Contiguous To Suite 820 & Is Available Should A Tenant Require Larger Space
- 3 Covered Parking Spaces (More May Be Available) @ Prevailing Rates; Presently \$115 Unreserved or \$190 Reserved Per Space Per Month
- Fully Built-Out, Modern Suite
  - Wire For Phone/It
  - Ceiling-Mounted Projector
  - Screen Installed In Space

# HISTORIC LANDMARK

## 5055 WILSHIRE BOULEVARD SUBLEASE



Linda Eng  
Lic. #: 01048287  
Senior Vice President  
310 780-4698  
[lindaeng@traversrealty.com](mailto:lindaeng@traversrealty.com)

