

# ATTRACTIVE WESTSIDE SUBLEASE

## 1964 Westwood Boulevard



- Location:** 1964 Westwood Boulevard  
Los Angeles, CA 90025
- Space:** Suite 300. Elevator lobby. 6,110 rentable square feet divisible to approximately 2,000 to 2,500 rentable square feet. 12% add-on factor, very efficient space.
- PRICE REDUCTION! \$2.75 FSG / RSF**
- Rental Rate:** ~~-\$3.00 full service gross~~, increases negotiable
- Sublease Term:** Sublease through September 30, 2012
- Availability:** January 1, 2009 for entire suite. Possession for divisible space upon sublease and consent signing.
- Parking:** 3:1,000 square feet leased at prevailing rates
- Improvements:** "As-Is" Space newly built-out one (1) year ago with 8 perimeter offices, executive restroom, conference, kitchen, storage and interior support areas.

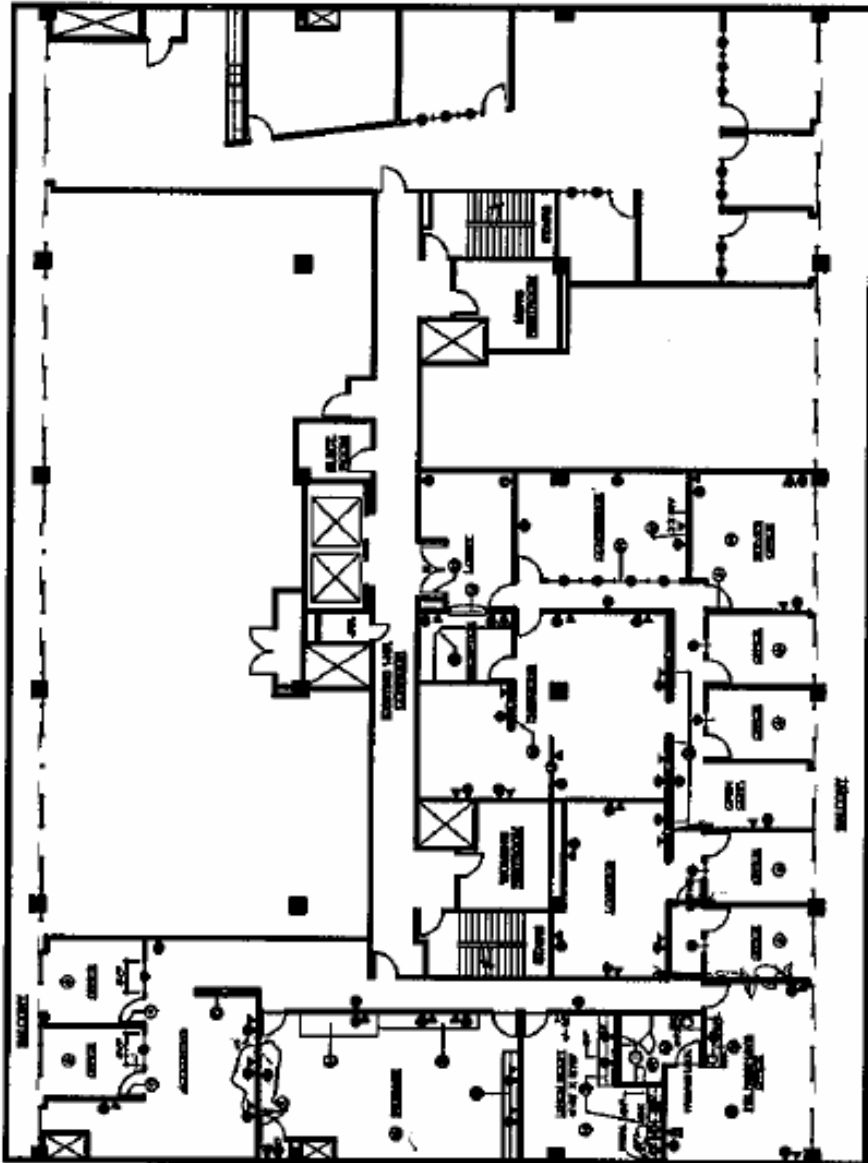
### For Information or Tour please contact:

Jeffrey D. Mintz  
Lic. #: 00756938  
Executive Vice President  
213 683-1500  
[jeffmintz@traversrealty.com](mailto:jeffmintz@traversrealty.com)



# ATTRACTIVE WESTSIDE SUBLEASE

## 1964 Westwood Boulevard



Jeffrey D. Mintz  
Lic. #: 00756938  
Executive Vice President  
213 683-1500  
[jeffmintz@traversrealty.com](mailto:jeffmintz@traversrealty.com)



This information has been obtained from sources believed reliable. While we do not doubt its accuracy, we have not verified it and make no guarantee, warranty or representation about it. It is your responsibility to independently confirm its accuracy and completeness. Any projections, opinions, assumptions or estimates used are for example only and do not represent the current or future performance of the property. The value of this transaction to you depends on tax and other factors which should be evaluated by your tax, financial and legal advisors. You and your advisors should conduct a careful, independent investigation of the property to determine to your satisfaction the suitability of the property for your needs.