

BROKER BONUS MAY BE AVAILABLE

1 WORLD TRADE CENTER

ATTRACTIVE LAW SPACE “MOVE-IN” CONDITION

Premises: 2,165 rentable square feet.
Suite 2350

Rate: NEGOTIABLE : BRING ALL OFFERS

Suite Info.: High Floor with Outstanding Views
Furniture & phones are negotiable
Above-standard improvements
Floor-to-ceiling glass window-line
Six offices
Kitchen and Break Room
Existing Reception area

Term: November 30, 2010

Features:

- Excellent harbor views
- Premier Long Beach office project
- Easy freeway access
- Ample amenities on-site

LUKE B. RAIMONDO
Lic. #: 01814454
213.430.2445

LUKE S. TROEDSON
Lic. #: 01847137
213.430.2476

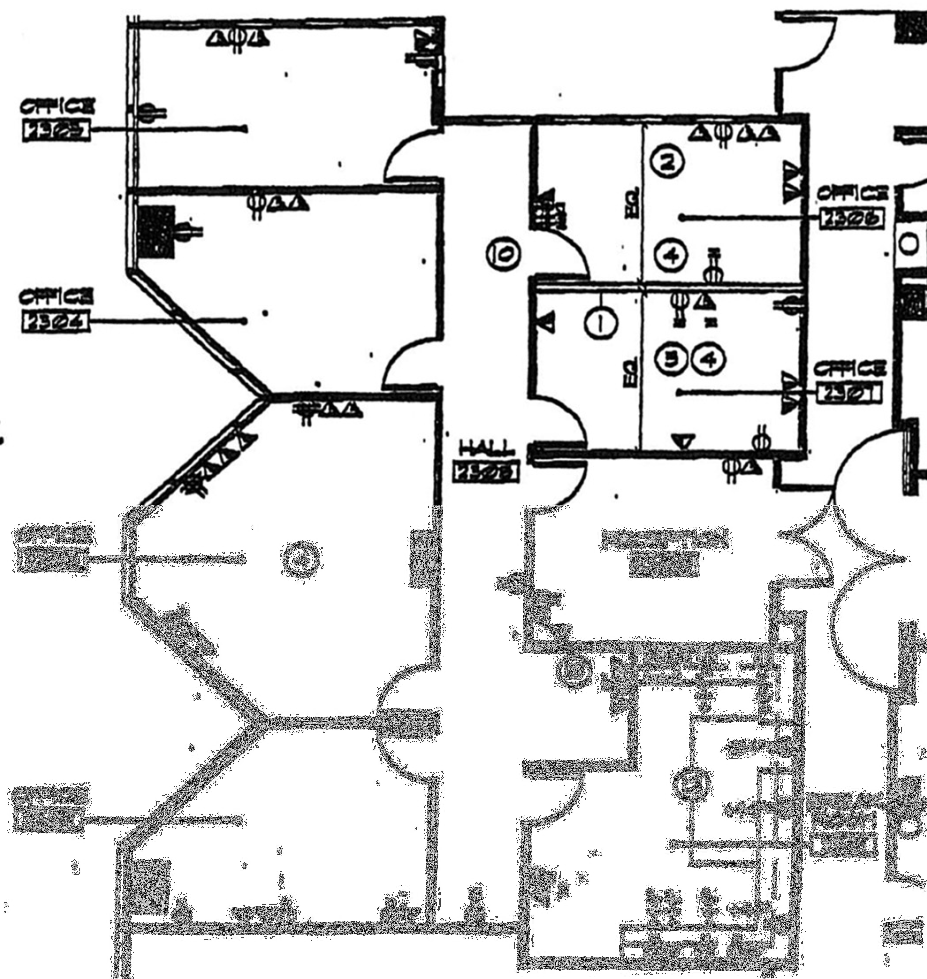


550 S. Hope Street, Suite 2600
Los Angeles, CA 90071

This information has been obtained from sources believed reliable. While we do not doubt its accuracy, we have not verified it and make no guarantee, warranty or representation about it. It is your responsibility to independently confirm its accuracy and completeness. Any projections, opinions, assumptions or estimates used are for example only and do not represent the current or future performance of the property. The value of this transaction to you depends on tax and other factors which should be evaluated by your tax, financial and legal advisors. You and your advisors should conduct a careful, independent investigation of the property to determine to your satisfaction the suitability of the property for your needs.

HIGHLY DESIRABLE LONG BEACH SUBLEASE

1 WORLD TRADE CENTER



LUKE B. RAIMONDO

Lic. #: 01814454

213.430.2445

LUKE S. TROEDSON

Lic. #: 01847137

213.430.2476



**550 S. Hope Street, Suite 2600
Los Angeles, CA 90071**

This information has been obtained from sources believed reliable. While we do not doubt its accuracy, we have not verified it and make no guarantee, warranty or representation about it. It is your responsibility to independently confirm its accuracy and completeness. Any projections, opinions, assumptions or estimates used are for example only and do not represent the current or future performance of the property. The value of this transaction to you depends on tax and other factors which should be evaluated by your tax, financial and legal advisors. You and your advisors should conduct a careful, independent investigation of the property to determine to your satisfaction the suitability of the property for your needs.