

2 VENTURE PLAZA IRVINE, CA

Office Space For Sublease

2,557 Rentable
Square Feet



For more information, contact:

Mark W. Gardner
(949) 644-5900 - Ext. 565
Tenant Advisor
Mgardner@traversrealty.com
Lic #: 01353867

Randall S. Parker
(949) 644-5900 - Ext. 561
President
Rparker@traversrealty.com
Lic #: 01082963



TRIVERS REALTY

840 Newport Center Drive
Suite 770
Newport Beach, CA 92660

CA Lic #: 00478795
OC Lic #: 01202640

949.644.5900 Tel.
949.644.5990 Fax

www.traversrealty.com

Sublease Premises: Suite 140
Size: 2,557 RSF
Asking Rate: \$1.80 FSG
Term: Thru January 31, 2013

FEATURES & AMENITIES

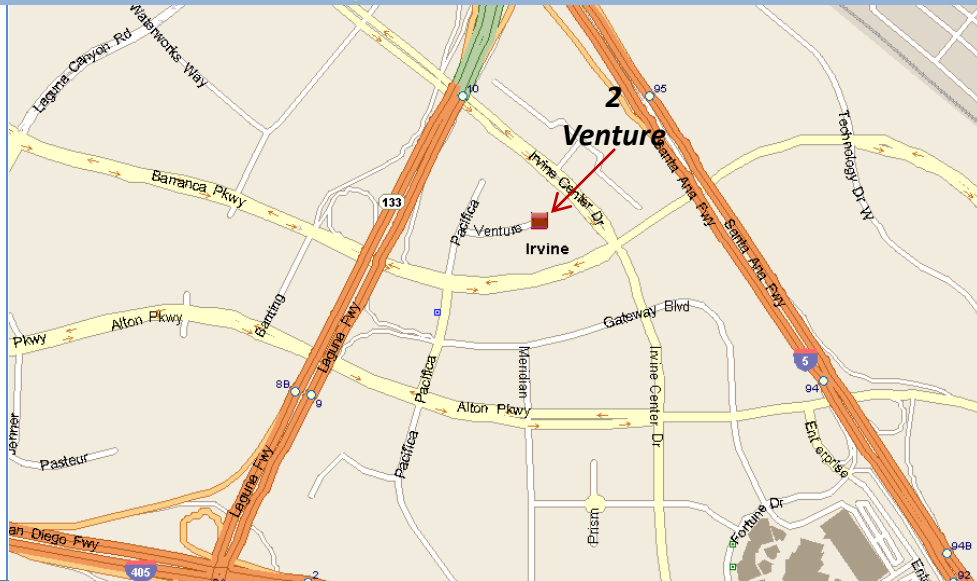
- Outstanding location at Irvine Center Drive & Barranca
- Ground floor lobby identity
- First class Tenant Improvements/Furniture & Fixtures
- Excellent 405, 5 and 133 freeway access
- Near restaurants & retail amenities
- Strong credit sublessor

This information has been obtained from sources believed reliable. While we do not doubt its accuracy, we have not verified it and make no guarantee, warranty or representation about it. It is your responsibility to independently confirm its accuracy and completeness. Any projections, opinions, assumptions or estimates used are for example only and do not represent the current or future performance of the property. The value of this transaction to you depends on tax and other factors which should be evaluated by your tax, financial and legal advisors. You and your advisors should conduct a careful, independent investigation of the property to determine to your satisfaction the suitability of the property for your needs.

2 VENTURE PLAZA IRVINE, CA

Office Space For Sublease

2,557 Rentable
Square Feet



For more information, contact:

Mark W. Gardner
(949) 644-5900 - Ext. 565
Tenant Advisor
Mgardner@traversrealty.com
Lic #: 01353867

Randall S. Parker
(949) 644-5900 - Ext. 561
President
Rparker@traversrealty.com
Lic #: 01082963



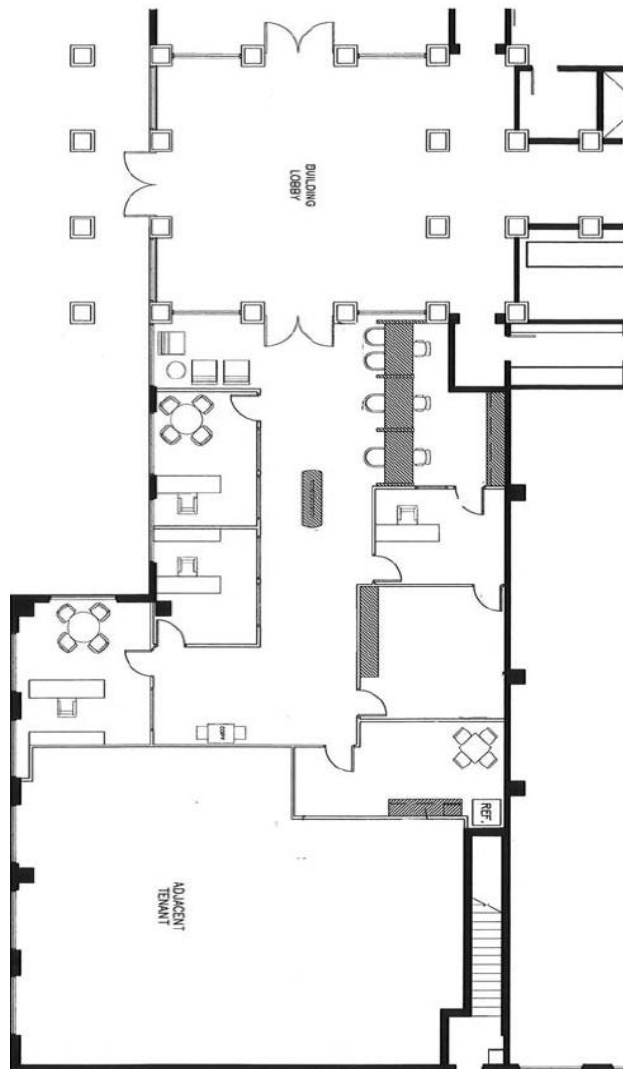
TRAVERS REALTY

840 Newport Center Drive
Suite 770
Newport Beach, CA 92660

CA Lic #: 00478795
OC Lic #: 01202640

949.644.5900 Tel.
949.644.5990 Fax

www.traversrealty.com



Suite 140
2,557 RSF