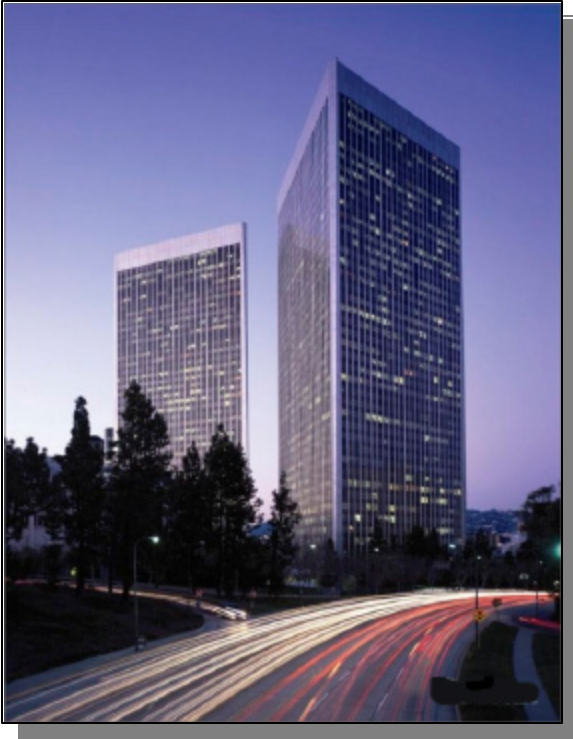


CENTURY PLAZA TOWER SUBLEASE OPPORTUNITY

2029 CENTURY PARK EAST

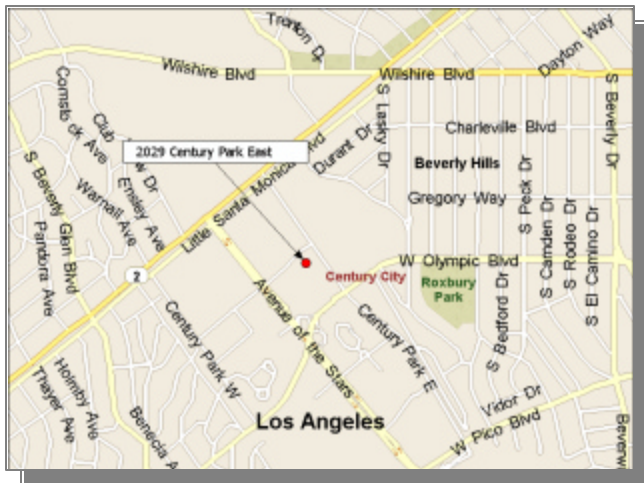


Premises: 1,338 rentable square feet.
Suite 430

Rate: \$4.50 per rentable square foot.

Suite
Info.: Great Courtyard Views
Interior Kitchen
Interesting Creative Build-Out
Furniture may be available

Term: January 1, 2011



LUKE TROEDSON
Lic. #: 01847137
808.389.9224

LUKE B. RAIMONDO ESQ.
Lic. #: 01814454
213.321.5770

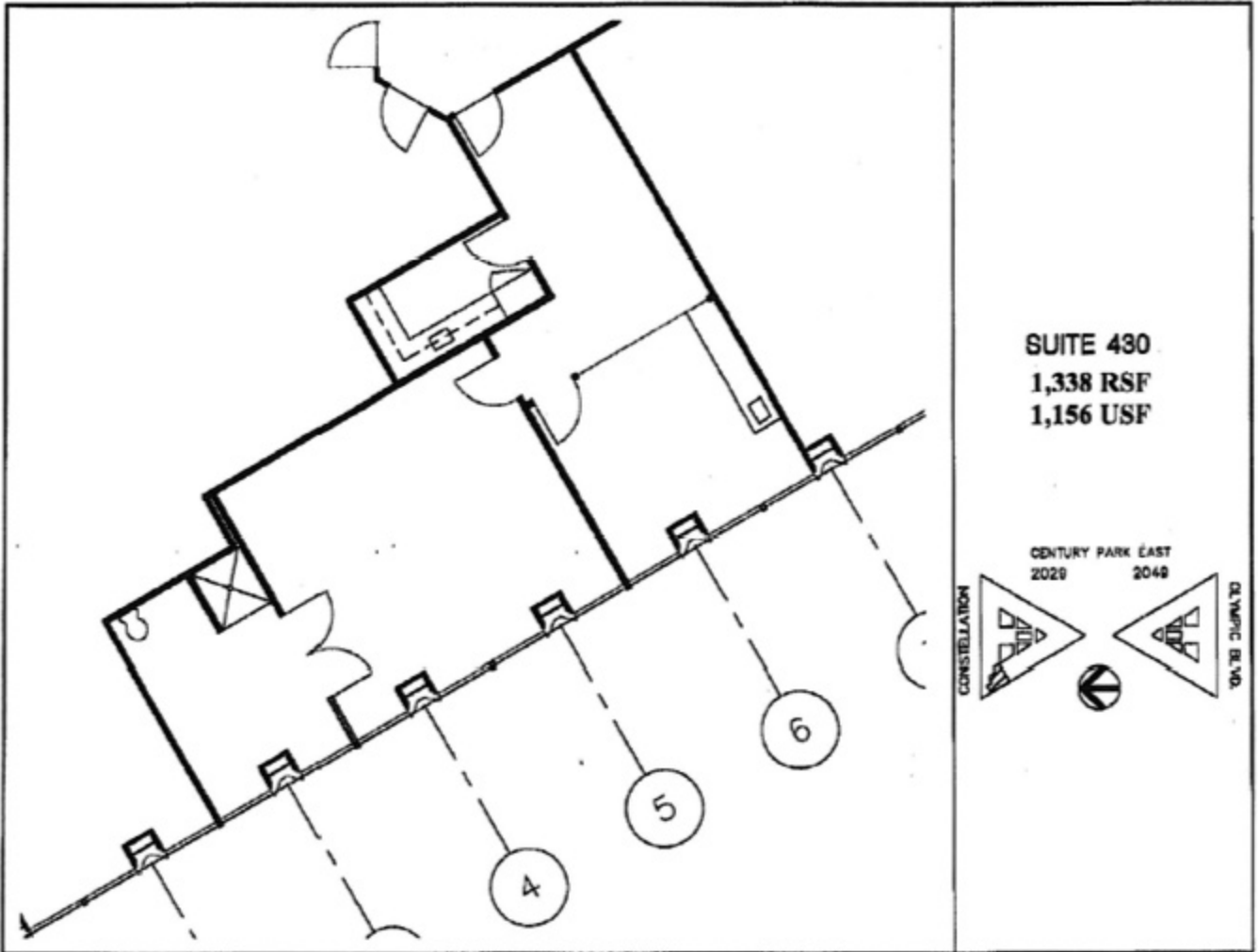


550 S. Hope Street, Suite 2600
Los Angeles, CA 90071

This information has been obtained from sources believed reliable. While we do not doubt its accuracy, we have not verified it and make no guarantee, warranty or representation about it. It is your responsibility to independently confirm its accuracy and completeness. Any projections, opinions, assumptions or estimates used are for example only and do not represent the current or future performance of the property. The value of this transaction to you depends on tax and other factors which should be evaluated by your tax, financial and legal advisors. You and your advisors should conduct a careful, independent investigation of the property to determine to your satisfaction the suitability of the property for your needs.

CENTURY PLAZA TOWER SUBLEASE OPPORTUNITY

2029 CENTURY PARK EAST



LUKE TROEDSON
Lic. #: 01847137
808.389.9224

LUKE B. RAIMONDO ESQ.
Lic. #: 01814454
213.321.5770



550 S. Hope Street, Suite 2600
Los Angeles, CA 90071

This information has been obtained from sources believed reliable. While we do not doubt its accuracy, we have not verified it and make no guarantee, warranty or representation about it. It is your responsibility to independently confirm its accuracy and completeness. Any projections, opinions, assumptions or estimates used are for example only and do not represent the current or future performance of the property. The value of this transaction to you depends on tax and other factors which should be evaluated by your tax, financial and legal advisors. You and your advisors should conduct a careful, independent investigation of the property to determine to your satisfaction the suitability of the property for your needs.