

NEWPORT CENTER SUBLEASE OPPORTUNITY

24 CORPORATE PLAZA • NEWPORT BEACH • CA

Available Spaces: Suite 190: 2,171 RSF

Rental Rate: \$3.50 / Full Service Gross

Term: Through 1/31/2012

Availability: Immediately



Features:

- > Furniture available
- > Excellent location – across the street from Bristol Farms & Gulf Stream
- > Free parking (4:1000)
- > Call to show



TRAVERS REALTY

840 Newport Center Drive, Suite 770
Newport Beach, California 92660
Tel. (949) 644-5900 | Fax. (949) 644-5990
CA Lic # - 00478795 | OC Lic # - 01202640
Come visit our website at www.traversrealty.com

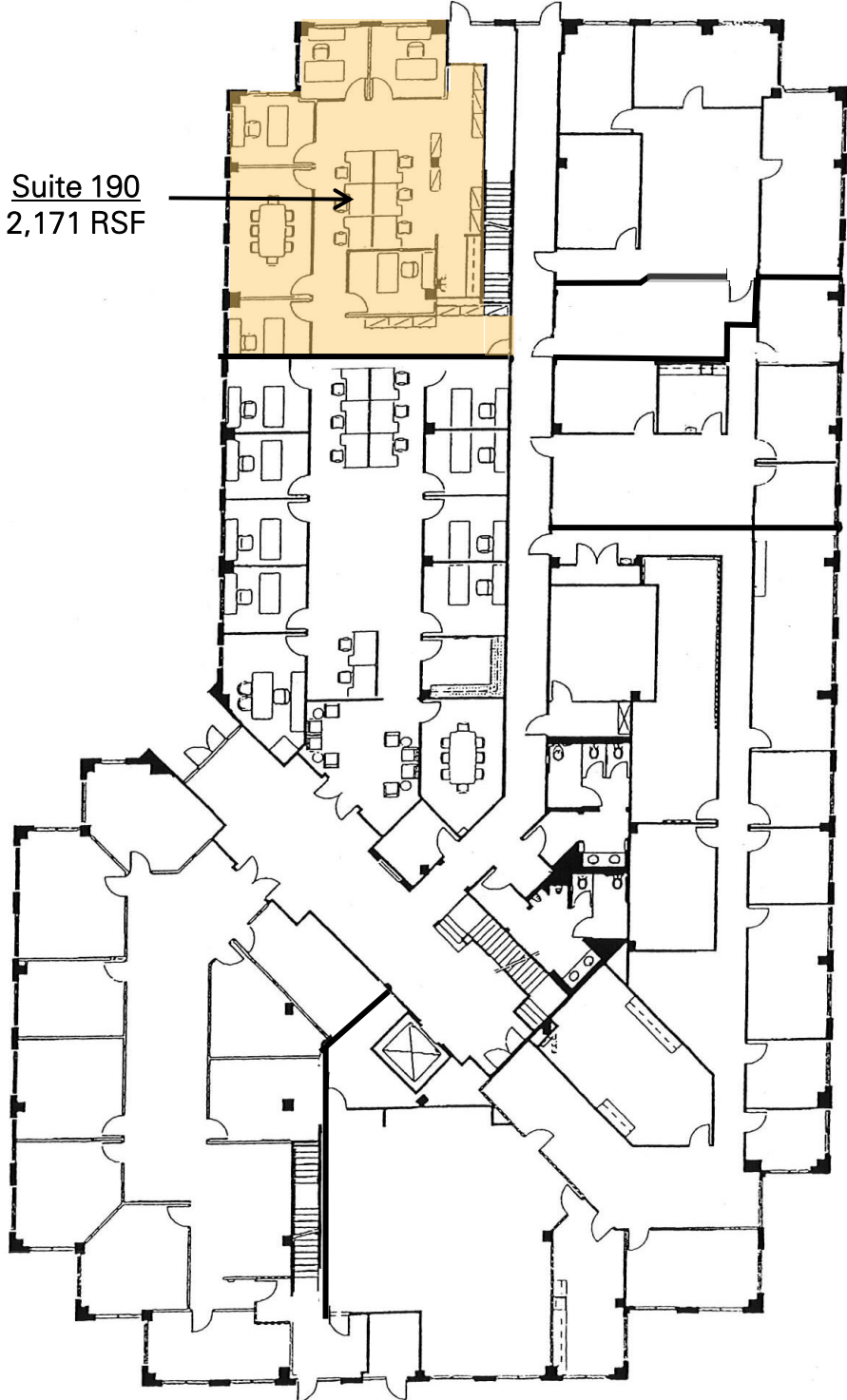
For More Information:

Steven T. Card – Senior Vice President /
Managing Director
CA DRE License #: 01204748
scard@traversrealty.com

Michael T. Beattie – Associate
CA DRE License #: 01742584
mbeattie@traversrealty.com

This information has been obtained from sources believed reliable. While we do not doubt its accuracy, we have not verified it and make no guarantee, warranty or representation about it. It is your responsibility to independently confirm its accuracy and completeness. Any projections, opinions, assumptions or estimates used are for example only and do not represent the current or future performance of the property. The value of this transaction to you depends on tax and other factors which should be evaluated by your tax, financial and legal advisors. You and your advisors should conduct a careful, independent investigation of the property to determine to your satisfaction the suitability of the property for your needs.

Floor Plan – 24 Corporate Plaza, 1st Floor, Newport Beach, CA



Suite 190
2,171 RSF

This information has been obtained from sources believed reliable. While we do not doubt its accuracy, we have not verified it and make no guarantee, warranty or representation about it. It is your responsibility to independently confirm its accuracy and completeness. Any projections, opinions, assumptions or estimates used are for example only and do not represent the current or future performance of the property. The value of this transaction to you depends on tax and other factors which should be evaluated by your tax, financial and legal advisors. You and your advisors should conduct a careful, independent investigation of the property to determine to your satisfaction the suitability of the property for your needs.