

OFFICE SPACE FOR SUBLEASE

STONEMILL DESIGN CENTER



2915 Red Hill Avenue | Building G | Costa Mesa | California | 92626

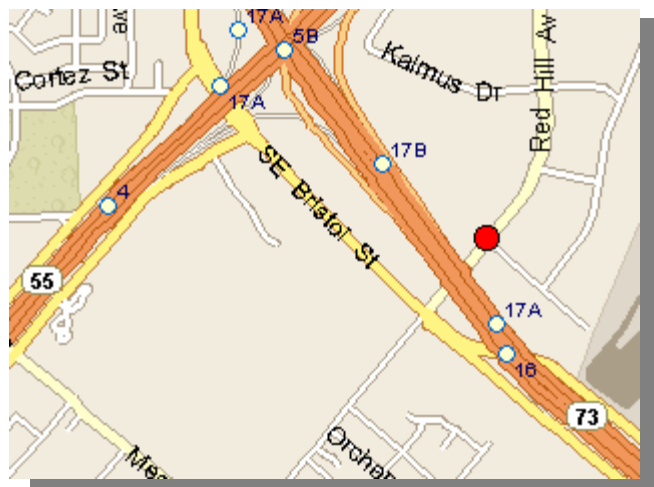
SIZE: Approximately 1,800 SF

RENT: \$1.75 / SF / Modified Gross

TERM: Thru October 31, 2010

FEATURES:

- High-visibility location fronting Red Hill
- Excellent 73 and 55 freeway access
- Near airport, restaurants, and retail amenities
- Office and retail uses possible
- Furniture available



This information has been obtained from sources believed reliable. While we do not doubt its accuracy, we have not verified it and make no guarantee, warranty or representation about it. It is your responsibility to independently confirm its accuracy and completeness. Any projections, opinions, assumptions or estimates used are for example only and do not represent the current or future performance of the property. The value of this transaction to you depends on tax and other factors which should be evaluated by your tax, financial and legal advisors. You and your advisors should conduct a careful, independent investigation of the property to determine to your satisfaction the suitability of the property for your needs.

MARK W. GARDNER
Associate
mgardner@traversrealty.com

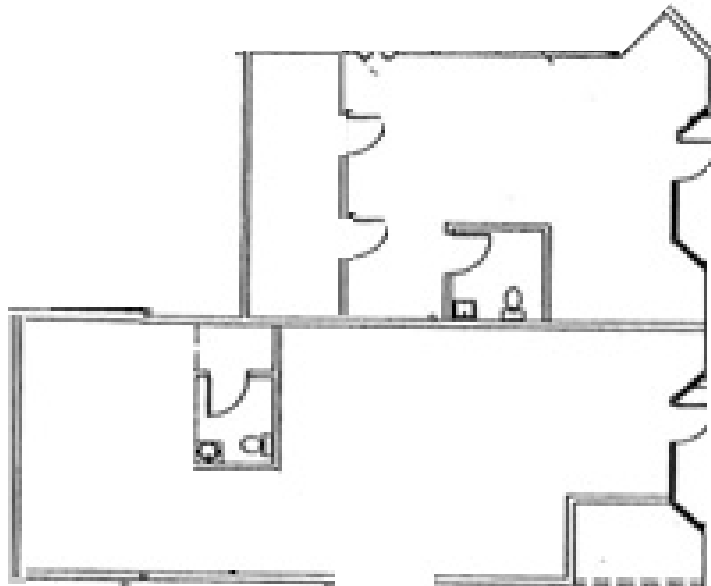
RANDALL S. PARKER
Executive Vice President / Managing Director
randyparker@traversrealty.com

 **Travers Realty Corporation**
The Tenant's Broker™

840 Newport Center Dr. #770 | Newport Beach | CA | 92660
Tel. 949.644.5900 | Fax. 949.644.5990

FLOOR PLAN

**STONEMILL DESIGN CENTER
2915 RED HILL AVENUE
BUILDING G
COSTA MESA, CA 92626**



This information has been obtained from sources believed reliable. While we do not doubt its accuracy, we have not verified it and make no guarantee, warranty or representation about it. It is your responsibility to independently confirm its accuracy and completeness. Any projections, opinions, assumptions or estimates used are for example only and do not represent the current or future performance of the property. The value of this transaction to you depends on tax and other factors which should be evaluated by your tax, financial and legal advisors. You and your advisors should conduct a careful, independent investigation of the property to determine to your satisfaction the suitability of the property for your needs.

MARK W. GARDNER
Associate
mgardner@traversrealty.com

RANDALL S. PARKER
Executive Vice President / Managing Director
randyparker@traversrealty.com

 **Travers Realty Corporation**
The Tenant's Broker™

840 Newport Center Dr. #770 | Newport Beach | CA | 92660
Tel. 949.644.5900 | Fax. 949.644.5990