

"MOVE-IN" CONDITION

GLENDALE SUBLEASE OPPORTUNITY



- Premises:** 655 N. Central Avenue
22nd Floor
Glendale, CA
- Approximately 22,613 rentable square feet
- Availability:** Immediately
- Term:** Through August 31, 2010
- Rental Rate:** \$18.00 per rsf
- Parking:** 63 Unreserved Spaces
8 Reserved Spaces
- Features:** 21 window-lined offices
- Large conference room (16 seats)
- Approximately 60 cubes
Training Room/Kitchen with sink; icemaker, folding wall, television, white board
- Server Room with supplemental HVAC unit
- Great views

For More Information:

Howard Feuerstein
Lic. #: 00458745
213.683.1500
howard@traversrealty.com

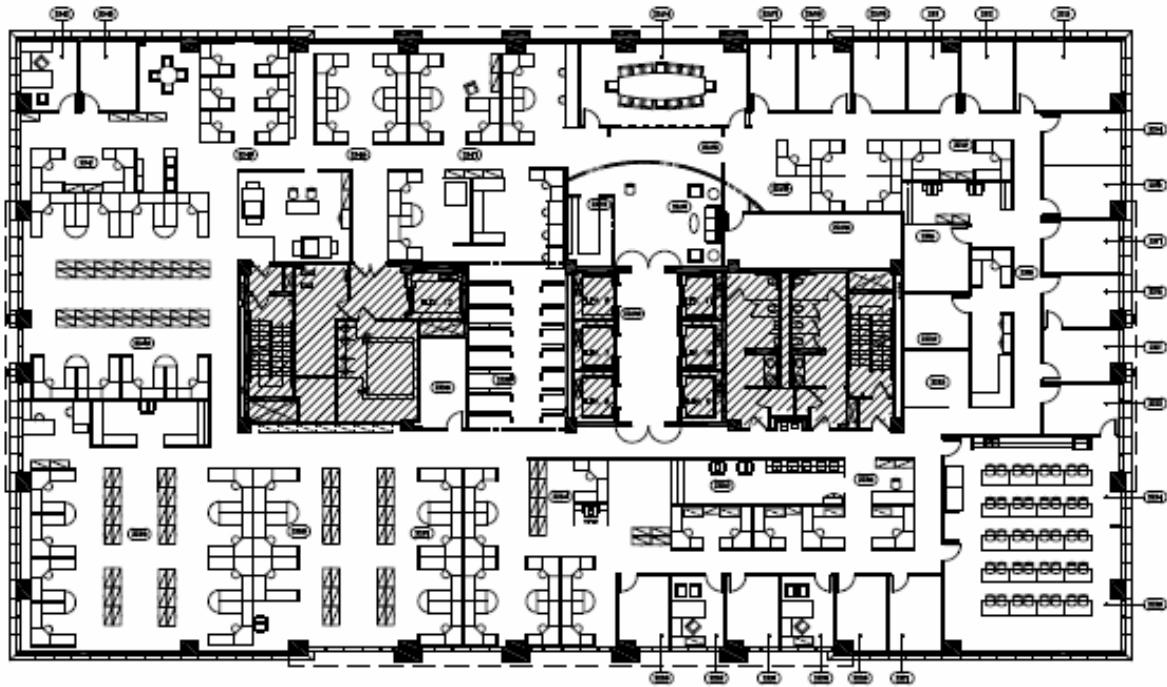
Stewart Niles
Lic. #: 01296927
213.430.2473
stewartniles@traversrealty.com



This information has been obtained from sources believed reliable. While we do not doubt its accuracy, we have not verified it and make no guarantee, warranty or representation about it. It is your responsibility to independently confirm its accuracy and completeness. Any projections, opinions, assumptions or estimates used are for example only and do not represent the current or future performance of the property. The value of this transaction to you depends on tax and other factors which should be evaluated by your tax, financial and legal advisors. You and your advisors should conduct a careful, independent investigation of the property to determine to your satisfaction the suitability of the property for your needs.

"MOVE-IN" CONDITION

GLENDALE SUBLEASE OPPORTUNITY



For More Information:

Howard Feuerstein

Lic. #: 00458745

213.683.1500

howard@traversrealty.com

Stewart Niles

Lic. #: 01296927

213.430.2473

stewartniles@traversrealty.com



This information has been obtained from sources believed reliable. While we do not doubt its accuracy, we have not verified it and make no guarantee, warranty or representation about it. It is your responsibility to independently confirm its accuracy and completeness. Any projections, opinions, assumptions or estimates used are for example only and do not represent the current or future performance of the property. The value of this transaction to you depends on tax and other factors which should be evaluated by your tax, financial and legal advisors. You and your advisors should conduct a careful, independent investigation of the property to determine to your satisfaction the suitability of the property for your needs.