

800 Wilshire Boulevard Sublease Opportunity



Premises:	Suite 1320
Space Available:	Approx. 1,147 rsf
Availability:	Immediately
Rental Rate:	\$2.15 per RSF
Term:	Negotiable

- Shared space
- Window-lined open space
- Well built-out space
- Separate entrance
- Shared use:
 - Kitchenette
 - Lobby
 - Copy / Fax

- Associate office potentially available as additional space

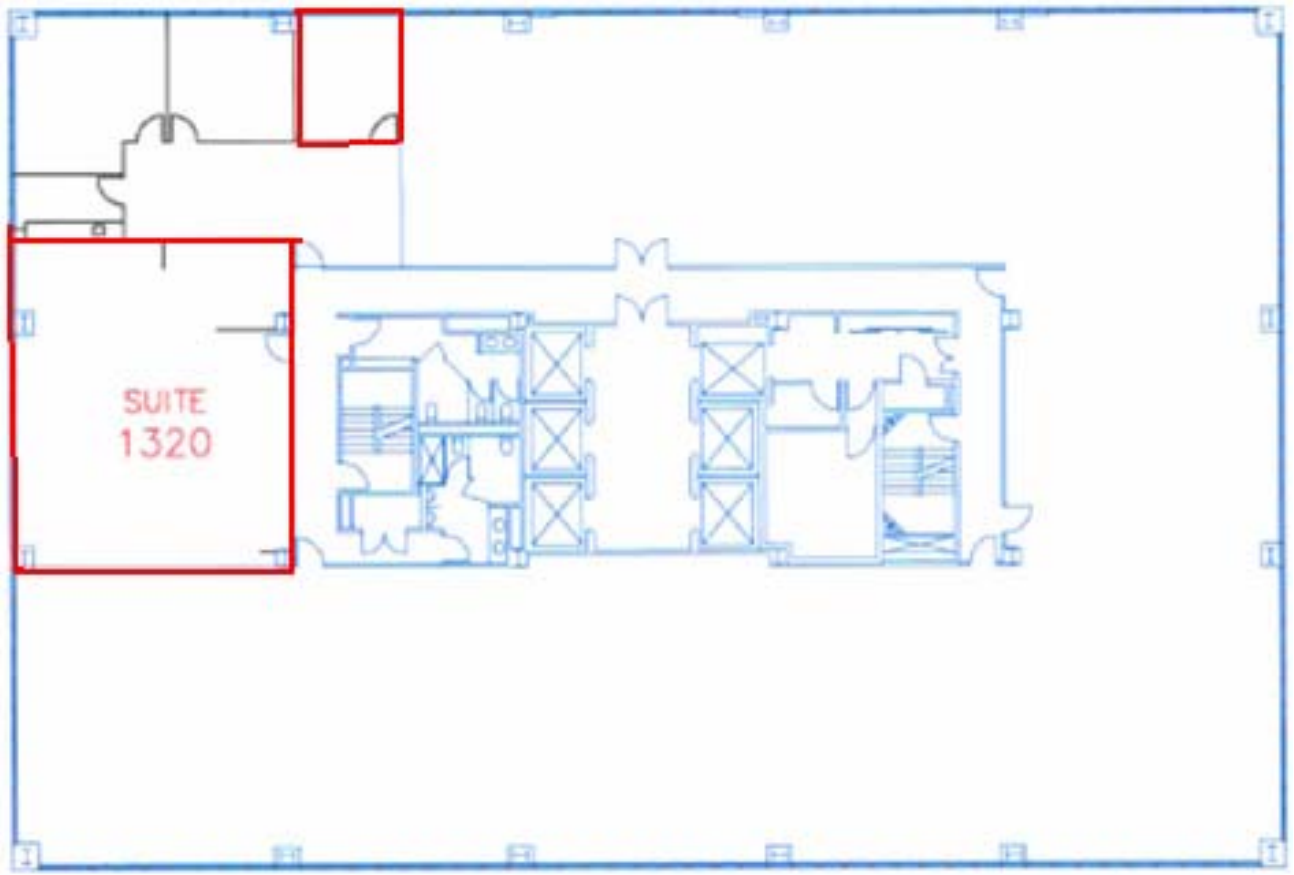
For More Information:

Jason Gancarczyk
Lic. #: 01855658
213.430.2455
jason@traversrealty.com

Cory Campbell
Lic#: 01869681
213.430.2468
c.campbell@traversrealty.com



800 Wilshire Boulevard Sublease Opportunity



Suite 1320

For More Information:

Jason Gancarczyk
Lic. #: 01855658
213.430.2455
jason@traversrealty.com

Cory Campbell
Lic#: 01869681
213.430.2468
c.campbell@traversrealty.com



This information has been obtained from sources believed reliable. While we do not doubt its accuracy, we have not verified it and make no guarantee, warranty or representation about it. It is your responsibility to independently confirm its accuracy and completeness. Any projections, opinions, assumptions or estimates used are for example only and do not represent the current or future performance of the property. The value of this transaction to you depends on tax and other factors which should be evaluated by your tax, financial and legal advisors. You and your advisors should conduct a careful, independent investigation of the property to determine to your satisfaction the suitability of the property for your needs.

800 Wilshire Boulevard Sublease Opportunity



Open Space



Open Space



Shared Lobby



Associate Office*

For More Information:

Jason Gancarczyk
Lic. #: 01855658
213.430.2455
jason@traversrealty.com

Cory Campbell
Lic#: 01869681
213.430.2468
c.campbell@traversrealty.com

**Potentially available as additional space*

 Travers Realty Corporation
THE TENANT'S BROKER™

This information has been obtained from sources believed reliable. While we do not doubt its accuracy, we have not verified it and make no guarantee, warranty or representation about it. It is your responsibility to independently confirm its accuracy and completeness. Any projections, opinions, assumptions or estimates used are for example only and do not represent the current or future performance of the property. The value of this transaction to you depends on tax and other factors which should be evaluated by your tax, financial and legal advisors. You and your advisors should conduct a careful, independent investigation of the property to determine to your satisfaction the suitability of the property for your needs.